

--

Dato:
Kunde:
Projekt:



CE



4921VS

Indbygningsblander til berøringsfri betjening.

Sensor plan med væg.

4921VSUP = Indbygningsblander til berøringsfri betjening 4900VS, sensor kabel VR509.

4921VSAP = Greb NR41, 225 mm fast tud 020, sensor VR510 plan med væg, 60 mm dækrosetter 001, 3001, VR512.

Elektronikboks VR2618 medleveres,

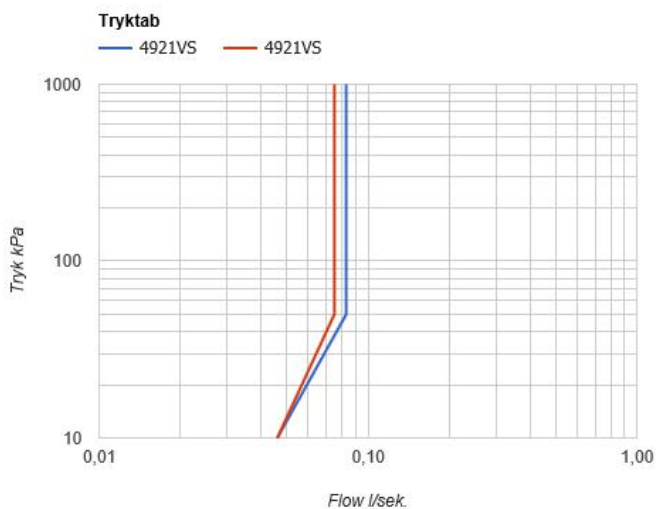
Handicapvenlig.

Flow

	Bar:	1,0	2,0	3,0	4,0	5,0
4921VS ¹⁾	(l/min)	2,9	4,1	5,0	5,0	5,0
4921VS ²⁾	(l/min)	2,6	3,7	4,5	4,5	4,5

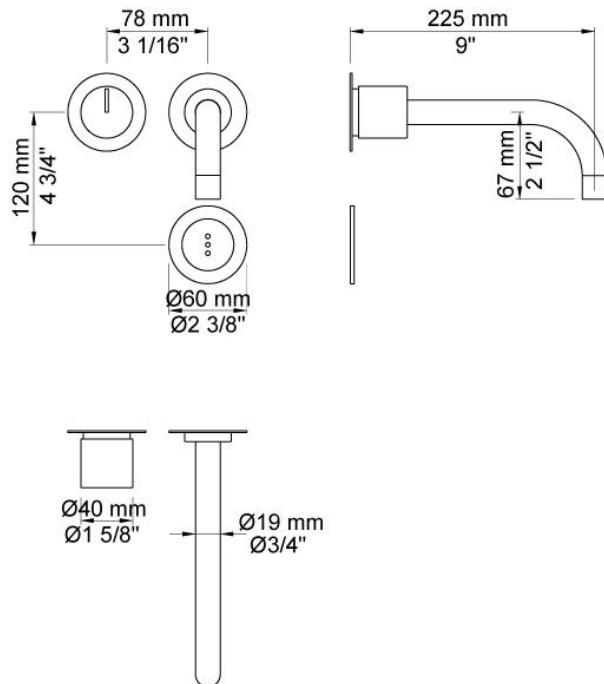
¹⁾ USA Standard

²⁾ USA Standard



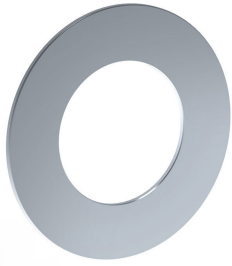
Beskrivelse og tekniske data

Montering	Elektronikboks 3/8" - Armatur 1/2"
Støjgruppe	Støjgruppe 1
Forudsat vandstrøm	0,10
Trykgruppe	Gruppe 150 kPa (Tryktabet over armaturet ved den forudsatte vandstrøm er mellem 50 og 150 kPa)

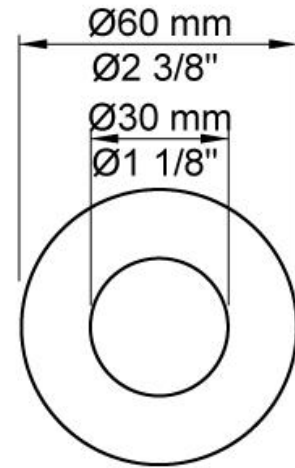


Leveres i farverne

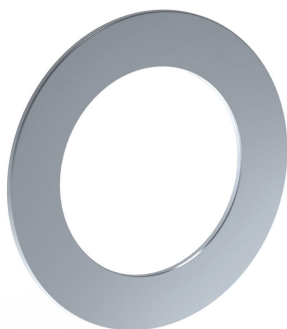
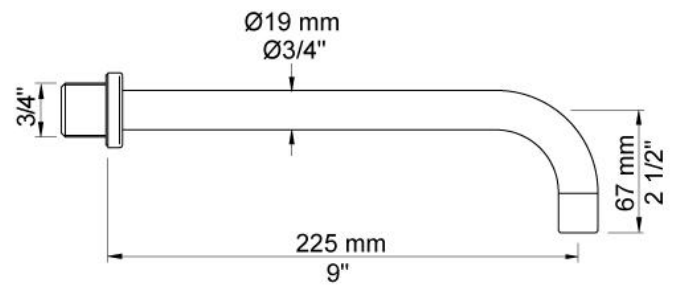
Farve 02, Grå	Farve 21, Mørkerød
Farve 04, Blå	Farve 25, Pink
Farve 05, Orange	Farve 27, Mat-sort
Farve 06, Lysegrøn	Farve 28, Mat-hvid
Farve 08, Gul	Farve 40, Børstet Rustfrit stål
Farve 09, Koksgrå	Farve 60, Sort
Farve 12, Mokka	Farve 61, Børstet sort
Farve 14, Orange-rød	Farve 62, Dyb sort
Farve 15, Mørkeblå	Farve 63, Kobber
Farve 16, Krom	Farve 64, Børstet kobber
Farve 17, Blank sort	Farve 65, Guld
Farve 18, Hvid	Farve 68, Sølv
Farve 19, Messing natur	Farve 70, Børstet guld
Farve 20, Børstet krom	

**001**

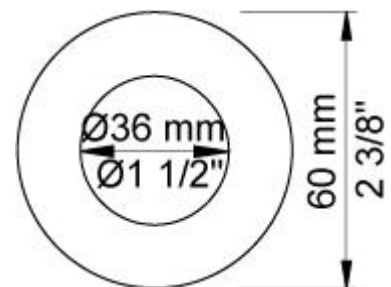
60 mm dækroset.
Hul \varnothing 30 mm.

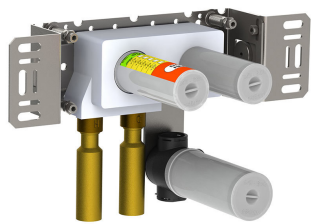
**020**

225 mm fast tud med vandbesparende luftindblander.

**3001**

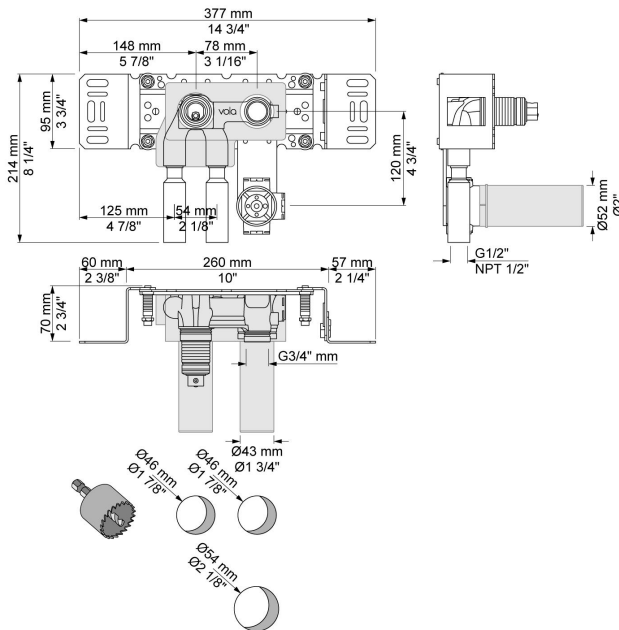
60 mm dækroset.
Hul \varnothing 36 mm.





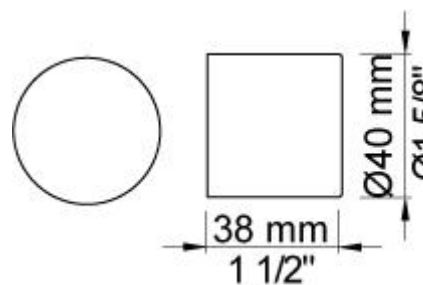
4900VS

Indbygningsblander til berøringsfri betjening.
Elektronikbox VR2618 medleveres.



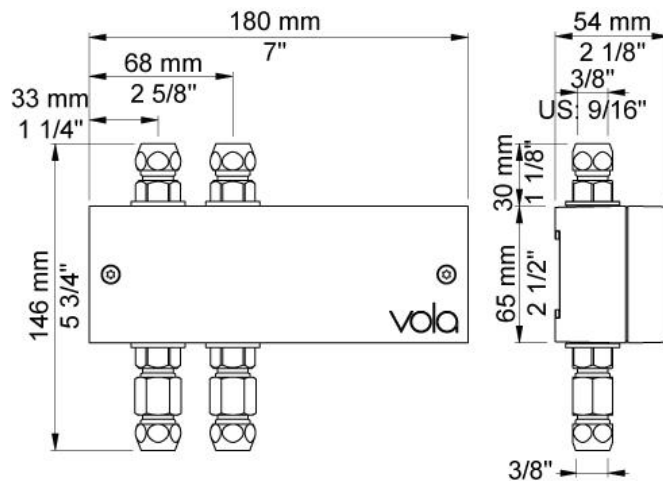
NR41

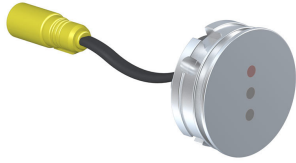
Betjeningsgreb til 4900.



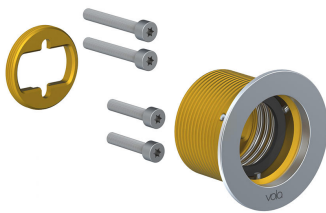
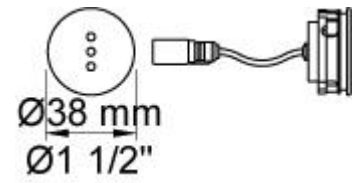
VR2618

Elektronikboks til HV1E, HV1EN, 4911, 4921, 4911VS og 4921VS.



**VR510**

Sensor øje til 4300, 4800 og 4900.

**VR512**

60 mm dækroset. Hul Ø38 mm.

